

Piston and Cylinder Set

Model: 2K S 240 - CP (stock) & 2K 240 - CP (custom)

Stock Strokes (in): 0.5, 1.0, 2.0, 3.0, 4.0, 5.0, 6.0, 7.0, 8.0

Dimensional

Bore Diameter: 0.945 in

Piston Area: 0.701 in²

Supply: Clean, Dry, Unlubricated Air

Pressure Range: Full Vacuum to 100 psi
(0.2 psi differential required for actuation)

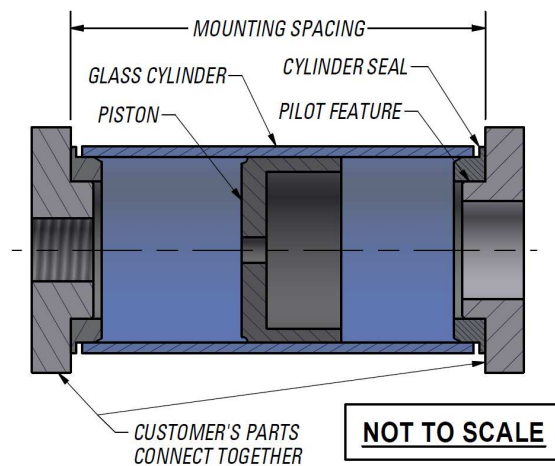
Filtration: 5-micron particle filter (coalescing filter recommended)

Mounting

Using Airpot cylinder seals: Stock configurations come with silicone cylinder seals (optional with custom parts). They are an easy and reliable way to mount and seal to each end of the glass cylinder. Make two customer's parts, one for each end of the glass cylinder. These can be designed to have a threaded port, open vent hole or dead ended, depending on the application requirements. Connect two customer's parts together with a baseplate, tie rods, or structural tube.

Customer's Part Pilot Feature: $\varnothing.698 \pm .001 \times .118$ long

Mounting Spacing = Stroke + .925



For more information, see drawing: CYLINDER SEAL TABLE

If using another method to mount the glass, cylinder seals can be removed and discarded.

Piston Friction Coefficient

Approximately 0.2 (static & dynamic)

Piston Leak <1.06 standard Liters /minute at 50 psi
<5.60 standard Liters /minute at 100 psi

Cycle Life

The very long cycle life of this product depends on how the cylinder is used as well as the requirements of your application. Leak will increase slowly as the piston wears with high number of cycles. High loads and especially high side loads along with cycling can increase friction. Typically, cylinders will last from 1 to 25 million cycles before they are replaced.

Environment

Temperature Range:

With standard cylinder seals: -20 °C to +100 °C

With -ET (extreme temperature) cylinder seals: -40 °C to +150 °C

Without cylinder seals: -40 °C to +150 °C

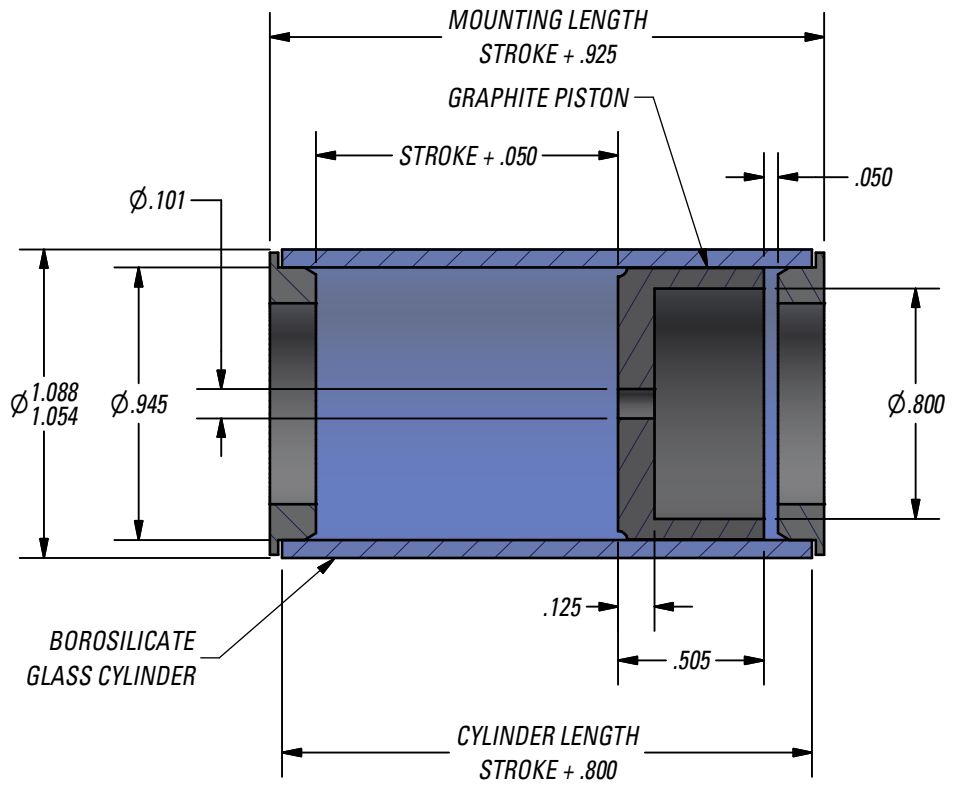
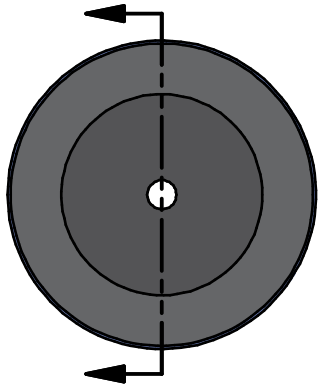
Mass

Cylinder Mass (g) = 8.4 x glass length

Piston Mass (g) = 4.7

Cylinder Seal Mass (g) = 1.2





STOCK STROKE LENGTHS
0.5
1.0
2.0
3.0
4.0
5.0
6.0
7.0
8.0

ADDITIONAL OPTIONS

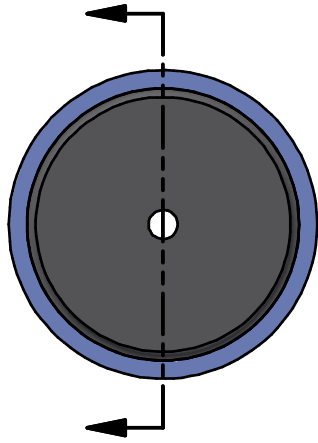
1. Add "-ET" after all other options for extreme temperature option.

Part Number:

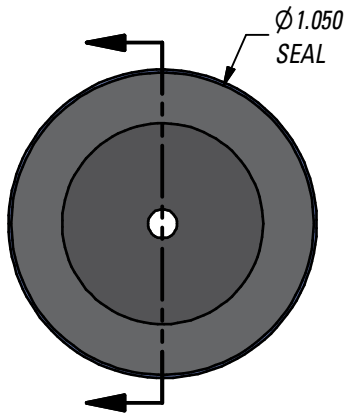
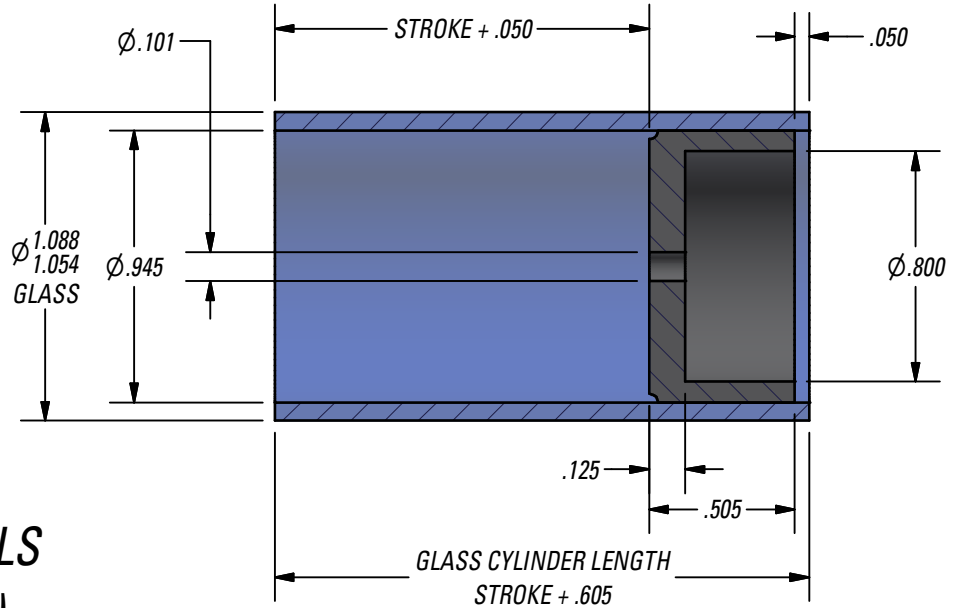
2K S 240 - □ CP

→ STROKE LENGTH

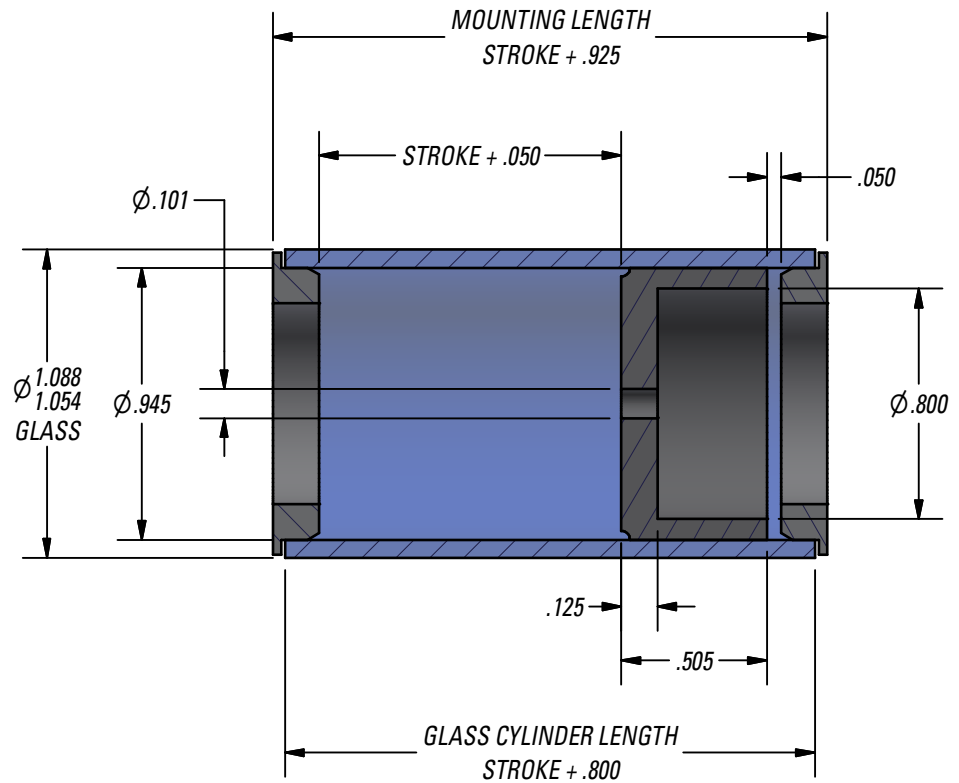
	35 LOIS ST NORWALK CT 06851 US	203-846-2021 www.airpot.com
	PART 2K S 240 - CP	REV 0106AF
STOCK 2K240 PISTON/CYLINDER SET	UNITS IN INCHES	



**WITHOUT CYLINDER SEALS
(LEAVE OPTION BLANK)**



**WITH CYLINDER SEALS
(OPTION CODE: J2)**



ADDITIONAL OPTIONS

1. If using cylinder seals, add "-ET" after all other options for extreme temperature cylinder seals.

Part Description:

2K S 240 - CP

└─┬─┘ "J2" FOR CYLINDER SEALS
└───┘ STROKE LENGTH

Airpot® 35 LOIS ST
NORWALK CT 06851
US

203-846-2021
www.airpot.com

PART

2K 240 - CP

REV
0117AF

CUSTOM 2K240 PISTON/CYLINDER SET UNITS IN INCHES

